

SPECIFICATIONS & MAINTENANCE

General Specification Details

Aidan Damask (Walnut, Maple, Birch, Pine)
 Benedict (Walnut, Oak, Pine)
 Cuthbert (Oak, Walnut)
 Bede (Oak, Pine, Maple, Birch)

Pitch	7
Rows	8
Pile Yarns	2/47's, 100% Undyed Wool
Pile Weight	1260g/m ² (37.2ozs yd ²)
Width	4.00m (13'1")
Suitability	Extra Heavy Contract

Aidan Damask (Gold, Burgundy, Umber, Graphite)
 Cuthbert (Oak, Graphite)

Pitch	7
Rows	8
Pile Yarns	2/42's, 80% Wool / 20% Nylon
Pile Weight	1310g/m ² (38.6ozs yd ²)
Width	4.00m (13'1")
Suitability	Extra Heavy Contract

Samples

Samples of all the designs and colourways illustrated can be produced in the form of "Kibby" carpet samples (to represent colour and design only). These are usually available within 72 hours.

Please note that whilst every effort is made to accurately replicate designs in a Kibby format, this is not fully representative of the finished woven product. Some allowance therefore must be made to take account of the visual differences which may occur depending on the design selected and the quality produced.

Quality Selection

The qualities detailed represent specifications which should satisfy most commercial requirements. With each particular installation, the decision on which quality is most appropriate will depend on the levels of traffic, colour and design as well as the length of time the carpet is expected to be installed.

We have many years experience in these considerations and can provide detailed advice on quality selection on a project by project basis.

Planning and Estimation Service

Using the latest Callidus planning software, Hugh Mackay can accurately estimate carpet requirements from site plans to any scale. Accurate estimations can be calculated and adjustments made to minimise wastage.

One critical area of importance is seam placement. Knowledge of customer flow through the building is used to guide the installer in the careful positioning of seams to avoid premature wear.

General Installation Recommendations

All patterned carpets should be installed in accordance with BS5325 : 2001 Installation of Textile Floorcoverings and NICF Manual detailing industry best practice.

General Maintenance Recommendations

Hugh Mackay Carpets recommend that this carpet is maintained in accordance with an agreed maintenance schedule which should include the following:

- Vacuum regularly •
- Remove spills immediately •
- Professionally clean as required •

Pile Reversal

All cut pile carpets can suffer from pile reversal and in certain instances this may become permanently bent or distorted for no specific reason that research has yet identified, giving areas of light and shade. This is also described as "shading" or "watermarking". It is not a defect in manufacture; it only occurs in a small percentage of all carpets and no liability whatsoever can be accepted by the manufacturer in respect of it.

Pile Pressure

All cut pile carpets are liable to show light and dark patches resulting from disturbance of the pile created by foot traffic or brushing. This is a normal feature and is not a defect in manufacture and no liability whatsoever can be accepted by the manufacturer in respect of it.

DURHAM CATHEDRAL COLLECTION





DURHAM CATHEDRAL COLLECTION

The Hugh Mackay brand is synonymous with high quality products incorporating a unique blend of design and elegance. The re introduction of Durham Cathedral brings with it reminders of classical style which our design team have combined with the most contemporary colour combinations to complement interiors where quality in every sense is a key requirement. Available from stock and containing various colourways in four designs totalling eighteen possible options the Durham Cathedral collection makes beautiful interiors easily accessible.


HUGH MACKAY
carpets

The design is copyright of Hugh Mackay and may not be reproduced without their written permission. Due to the limitations of the printing process, we are unable to guarantee an exact colour reproduction of these designs. Hugh Mackay reserve the right to change any of these specifications without prior notice. E.O.E.
© Hugh Mackay 2010.

AIDAN DAMASK

HUGH MACKAY | DURHAM CATHEDRAL COLLECTION



BIRCH
DESIGN ID: 24-M110778F



BURGUNDY
DESIGN ID: 32-M110778F



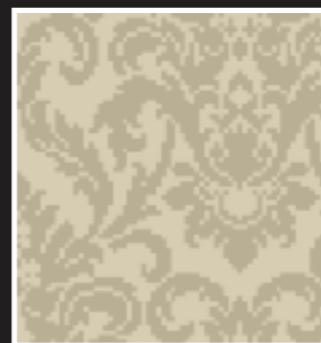
GOLD
DESIGN ID: 20-M110778F



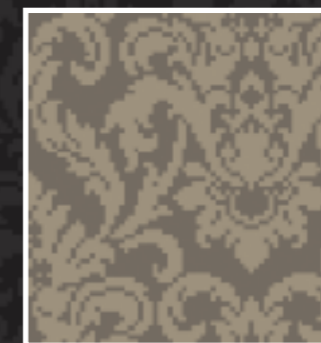
GRAPHITE
DESIGN ID: 40-M110778F



UMBER
DESIGN ID: 49-M110778F



MAPLE
DESIGN ID: 21-M110778F



WALNUT
DESIGN ID: 36-M110778F



PINE
DESIGN ID: 39-M110778F

BEDE

HUGH MACKAY | DURHAM CATHEDRAL COLLECTION



BIRCH
DESIGN ID: 7-M268378F



MAPLE
DESIGN ID: 8-M268378F



PINE
DESIGN ID: 9-M268378F



OAK
DESIGN ID: 10-M268378F

BENEDICT

HUGH MACKAY | DURHAM CATHEDRAL COLLECTION



OAK
DESIGN ID: 5-M237178F



WALNUT
DESIGN ID: 7-M237178F



PINE
DESIGN ID: 3-M237178F



CUTHBERT

HUGH MACKAY | DURHAM CATHEDRAL COLLECTION



OAK
DESIGN ID: 5-M226178F



WALNUT
DESIGN ID: 4-M226178F



GRAPHITE
DESIGN ID: 3-M226178F